



Ministry of Social Affairs of Estonia  
Department of Statistics and Analysis,  
Medical Statistics Bureau

Latvian Health Statistics and Medical  
Technology Agency, Health Statistics  
Department

Lithuanian Health Information Centre

***Health in the Baltic Countries***  
**2002**

***11-th edition***

**2003**

UDK 61 (474.2 + 474.3 + 474.5) (083)

He - 04

ISBN 9984-695-07-7

**Preface**

The eleventh edition “Health in the Baltic Countries 2002” presents the latest available health statistics data in the Baltic Countries – The Republic of Estonia, The Republic of Latvia, The Republic of Lithuania and comprises main population health area – demographic trends, causes of death, selected diseases occurrence as well as health care resources and utilization.

Basic sources of data – annual and special reports of medical institutions, computerized health databases and registers, certain vital statistics data are drawn from official publications of State Statistics Offices of the Baltic Countries.

The bulletin is a joint issue of Ministry of Social Affairs of Estonia, Department of Statistics and Analysis, Medical Statistics Bureau, Latvian Health Statistics and Medical Technology Agency, Lithuanian Health Information Centre. More comprehensive data may be obtained from these institutions.

**Population at 01.01.2003**

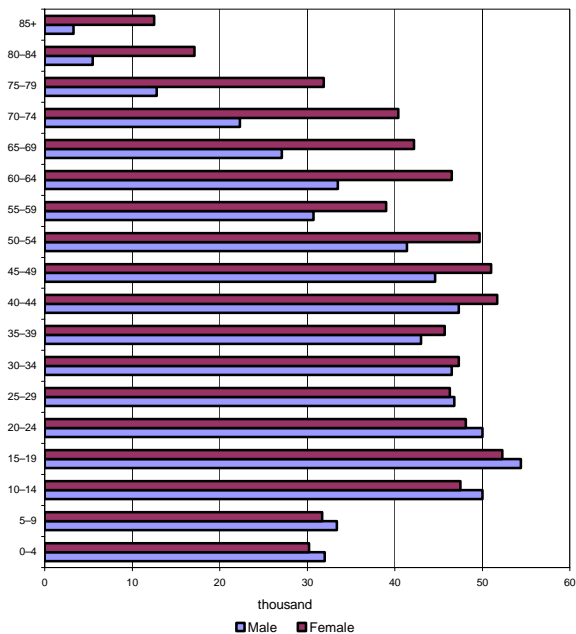
	<b>Estonia</b>	<b>Latvia</b>	<b>Lithuania</b>
<b>Population (thousand)</b>	1356.0	2331.5	3462.5
<b>Per 1 km<sup>2</sup></b>	30.0	36.1	53.1
<b>Urban (thousand)</b>	902.8	1580.5	2317.2
<b>%</b>	66.6	67.8	66.9
<b>Rural (thousand)</b>	453.2	751.0	1145.3
<b>%</b>	33.4	32.2	33.1
<b>Males (thousand)</b>	625.0	1073.1	1617.3
<b>%</b>	46.1	46.0	46.7
<b>Females (thousand)</b>	731.1	1258.4	1845.2
<b>%</b>	53.9	54.0	53.3
<b>Under working age (%)</b>	18.2	16.0	19.8
<b>Working age (%)</b>	60.5	62.4	60.0
<b>Over working age (%)</b>	21.3	21.6	20.2
<b>Working age</b>			
<b>Males</b>	16-63	15-61	16-61
<b>Females</b>	16-58	15-58	16-57

## Health in the Baltic countries

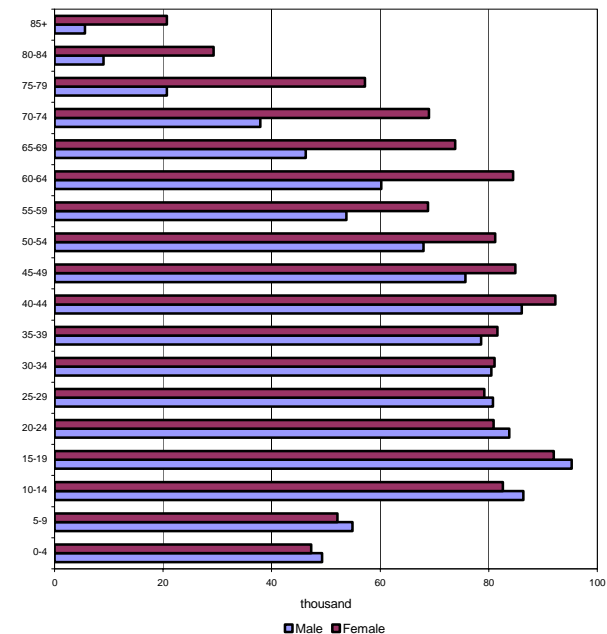
### General data

	Estonia	Latvia	Lithuania
Official name of the state	Republic of Estonia (Eesti Vabariik)	Republic of Latvia (Latvijas Republika)	Republic of Lithuania (Lietuvos Respublika)
Independence Day	24 February (1918)	18 November (1918)	16 February (1918)
State's governing body	Parliament (Riigikogu), 101 members, elected for the period of 4 years	Parliament (Saeima), 100 members, elected for the period of 4 years	Parliament (Seimas), 141 members, elected for the period of 4 years
Governmental structure	Republic, the President is elected for the period of 5 years	Republic, the President is elected for the period of 4 years	Republic, the President is elected for the period of 5 years
Area (thousand km <sup>2</sup> )	45.2	64.6	65.3
Major islands	Saaremaa, 2671 km <sup>2</sup> Hiiumaa, 989 km <sup>2</sup> Muhu, 198 km <sup>2</sup>	-	-
Major rivers	Võhandu, 162 km (through lake Tamula) Pärnu, 144 km Põltsamaa, 135 km	Daugava, 1005 km Gauja, 452 km Venta, 346 km	Nemunas, 937.4 km Neris, 509.5 km Venta, 346 km
Major lakes	Peipsi, 3555 km <sup>2</sup> (in Estonia 1529 km <sup>2</sup> ) Võrtsjärv, 271 km <sup>2</sup> Narva veehoidla (artificial lake) 191 km <sup>2</sup> (in Estonia 38 km <sup>2</sup> )	Lubāns, 80.7 km <sup>2</sup> Rāzna, 57.6 km <sup>2</sup> Engure, 40.5 km <sup>2</sup>	Drūkšiai, 44.8 km <sup>2</sup> Dysnai, 24.4 km <sup>2</sup> Dusia, 23.3 km <sup>2</sup>
The highest point	Suur Munamägi, 318 m	Gaiziņkalns, 311.6 m	Juozapinė, 293.6 m
Average daily temperature in January 2002	-2.4°C	-1.0°C	-1.3°C
Average daily temperature in July 2002	+19.1°C	+20.1°C	+20.0°C
Average daily temperature in 2002	+6.2°C	+7.7°C	+7.7°C
Administrative units	15 counties, 39 cities, 8 cities without municipal status, 202 rural municipalities	15 counties, 26 districts, 77 cities and towns, 461 rural municipalities	10 counties, 106 cities and towns, 56 rural municipalities
Capital, inhabitants (thousand)	Tallinn 397.0	Riga 739.2	Vilnius 553.2
Official language	Estonian	Latvian	Lithuanian
National currency	Estonian kroon=100 sents 1 EEK = 0.064 EUR	Latvian lats=100 santims 1 LVL = 1.715 EUR	Lithuanian lits=100 centas 1 LTL = 0.290 EUR

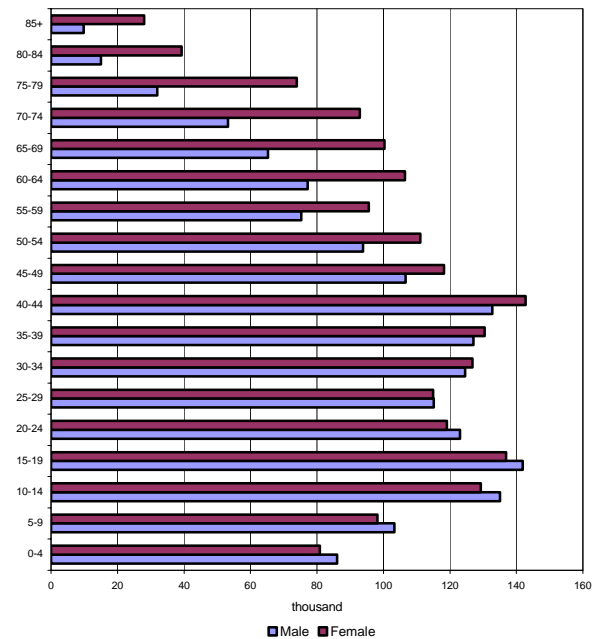
Population by age at 01.01.2003



Estonia

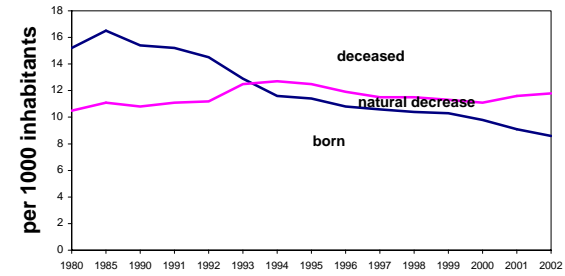
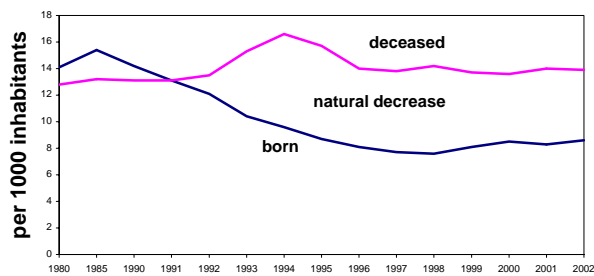
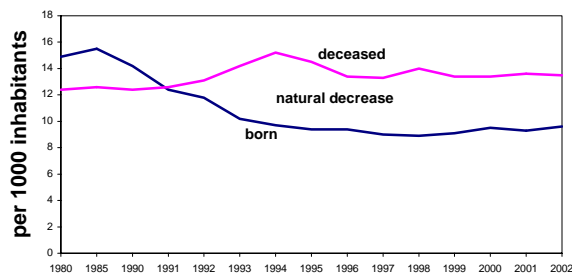


Latvia



Lithuania

Trends of demographics indicators



**Health in the Baltic countries**

**Resident population by age and sex at 01.01.2003**

	Estonia						Latvia						Lithuania					
	Total		Males		Females		Total		Males		Females		Total		Males		Females	
	Number	%	Number	%	Number	%	Number	%	Number	%	Number	%	Number	%	Number	%	Number	%
Total	1356045	100.0	624961	100.0	731084	100.0	2331480	100.0	1073057	100.0	1258423	100.0	3462553	100.0	1617304	100.0	1845249	100.0
0-4	62175	4.6	32012	5.1	30163	4.1	96596	4.1	49306	4.6	47290	3.8	166972	4.82	86072	5.32	80900	4.38
5-9	65107	4.8	33436	5.4	31671	4.3	107004	4.6	54880	5.1	52124	4.1	201554	5.82	103307	6.39	98247	5.32
10-14	97479	7.2	49985	8.0	47494	6.5	169041	7.3	86394	8.1	82647	6.6	264439	7.64	135133	8.36	129306	7.01
15-19	106728	7.9	54436	8.7	52292	7.2	187305	8.0	95334	8.9	91971	7.3	278778	8.05	141877	8.77	136901	7.42
20-24	98131	7.2	50013	8.0	48118	6.6	164717	7.1	83793	7.8	80924	6.4	242033	6.99	122983	7.60	119050	6.45
25-29	93094	6.9	46842	7.5	46252	6.3	159990	6.9	80838	7.5	79152	6.3	230042	6.64	115097	7.12	114945	6.23
30-34	93792	6.9	46481	7.4	47311	6.5	161560	6.9	80491	7.5	81069	6.4	251389	7.26	124589	7.70	126800	6.87
35-39	88712	6.5	43018	6.9	45694	6.3	160288	6.9	78640	7.3	81648	6.5	257463	7.44	127106	7.86	130357	7.06
40-44	99016	7.3	47275	7.6	51741	7.1	178354	7.6	86102	8.0	92252	7.3	275645	7.96	132838	8.21	142807	7.74
45-49	95566	7.0	44554	7.1	51012	7.0	160640	6.9	75694	7.1	84946	6.8	224937	6.50	106716	6.60	118221	6.41
50-54	91131	6.7	41446	6.6	49685	6.8	149131	6.4	67978	6.3	81153	6.4	205044	5.92	93934	5.81	111110	6.02
55-59	69710	5.1	30717	4.9	38993	5.3	122607	5.3	53839	5.0	68768	5.5	170918	4.94	75281	4.65	95637	5.18
60-64	79954	5.9	33478	5.4	46476	6.4	144699	6.2	60243	5.6	84456	6.7	183654	5.30	77156	4.77	106498	5.77
65-69	69308	5.1	27144	4.3	42164	5.8	120150	5.2	46335	4.3	73815	5.9	165572	4.78	65259	4.04	100313	5.44
70-74	62676	4.6	22274	3.6	40402	5.5	106884	4.6	37898	3.5	68986	5.5	146131	4.22	53194	3.29	92937	5.04
75-79	44707	3.3	12846	2.1	31861	4.4	77817	3.3	20663	1.9	57154	4.5	105892	3.06	31979	1.98	73913	4.01
80-84	22520	1.7	5454	0.9	17066	2.3	38345	1.6	9022	0.8	29323	2.3	54310	1.57	15016	0.93	39294	2.13
>=85	15798	1.2	3285	0.5	12513	1.7	26352	1.1	5607	0.5	20745	1.6	37780	1.09	9767	0.60	28013	1.52
Unknown	441	0.0	265	0.0	176	0.0	-	-	-	-	-	-	-	-	-	-	-	-

## Health in the Baltic countries

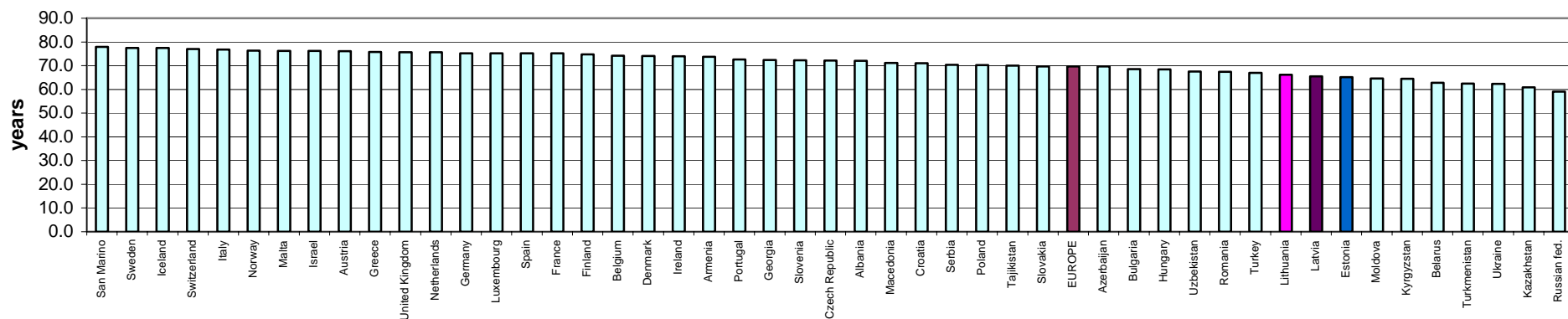
### Nativity, general mortality and natural increase per 1000 population

Years	Estonia			Latvia			Lithuania		
	Nativity	General mortality	Natural increase	Nativity	General mortality	Natural increase	Nativity	General mortality	Natural increase
1897	29.2*	19.1*	10.1*	30.8	20.6	10.2	-	-	-
1913	25.1	18.4	6.7	24.2	16.2	8.0	-	-	-
1920	18.4	16.9	1.5	17.0	19.6	-2.6	-	-	-
1925	18.3	16.5	1.8	22.2	14.9	7.3	28.9	16.9	12.0
1935	15.9	15.0	0.9	17.6	14.2	3.4	-	-	-
1940	16.1	17.0	-0.9	19.3	15.7	3.6	23.0	13.0	10.0
1950	18.4	14.4	4.0	17.6	12.9	4.7	23.6	12.0	11.6
1960	16.6	10.5	6.1	16.7	10.0	6.7	22.5	7.8	14.7
1965	14.8	10.6	4.2	13.8	10.1	3.7	18.1	7.9	10.2
1970	16.0	11.2	4.8	14.6	11.3	3.3	17.7	8.9	8.8
1975	15.0	11.6	3.4	14.2	12.2	2.0	15.7	9.5	6.2
1980	14.9	12.4	2.5	14.1	12.8	1.3	15.2	10.5	4.7
1985	15.5	12.6	2.9	15.4	13.2	2.2	16.5	11.1	5.4
1990	14.2	12.4	1.8	14.2	13.1	1.1	15.4	10.8	4.6
1991	12.4	12.6	-0.2	13.1	13.1	0.0	15.2	11.1	4.1
1992	11.8	13.1	-1.3	12.1	13.5	-1.4	14.5	11.2	3.3
1993	10.2	14.2	-4.0	10.4	15.3	-4.9	12.9	12.5	0.4
1994	9.7	15.2	-5.5	9.6	16.6	-7.0	11.6	12.7	-1.1
1995	9.4	14.5	-5.1	8.7	15.7	-7.0	11.4	12.5	-1.1
1996	9.4	13.4	-4.0	8.1	14.0	-5.9	10.8	11.9	-1.1
1997	9.0	13.3	-4.3	7.7	13.8	-6.1	10.6	11.5	-0.9
1998	8.9	14.0	-5.1	7.6	14.2	-6.6	10.4	11.5	-1.1
1999	9.1	13.4	-4.3	8.1	13.7	-5.6	10.3	11.3	-1.0
2000	9.5	13.4	-3.9	8.5	13.6	-5.1	9.8	11.1	-1.3
2001	9.3	13.6	-4.3	8.3	14.0	-5.7	9.1	11.6	-2.5
2002	9.6	13.5	-3.9	8.6	13.9	-5.3	8.6	11.8	-3.2

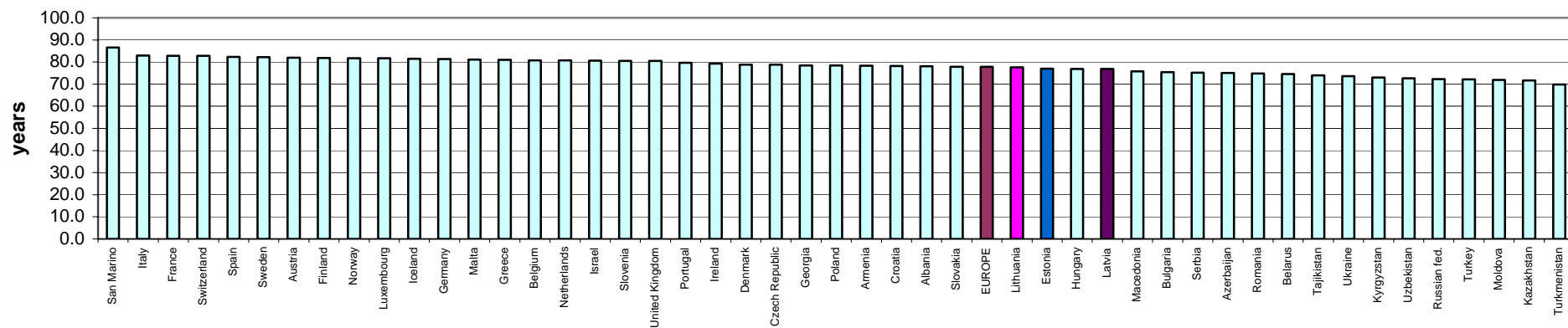
\* North Estonia 1896-1900

Life expectancy at birth in European countries\*

males



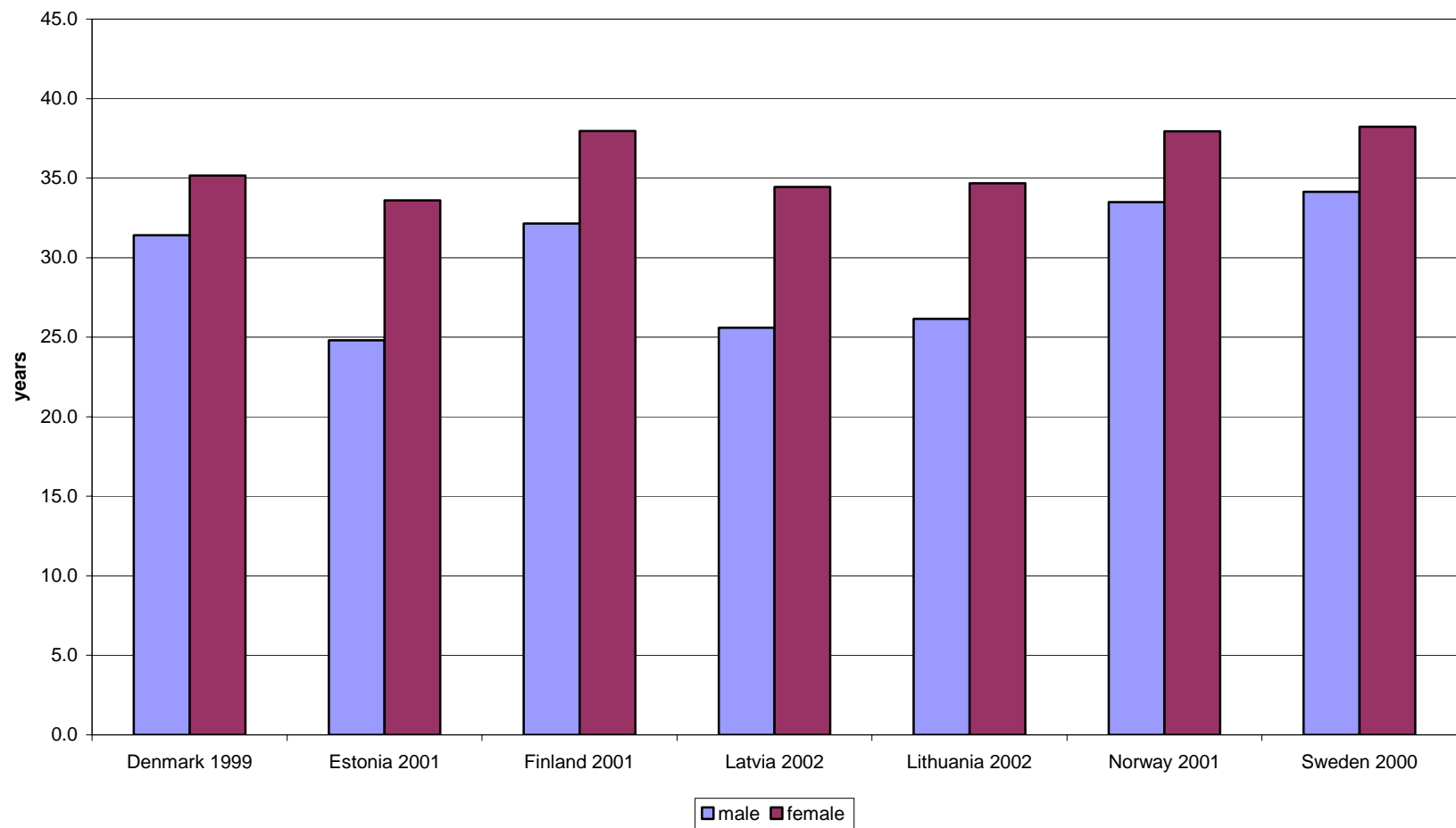
females



\* Data for Estonia, Latvia and Lithuania – 2002, other countries 1997-2002



Life expectancy at the age 45 years



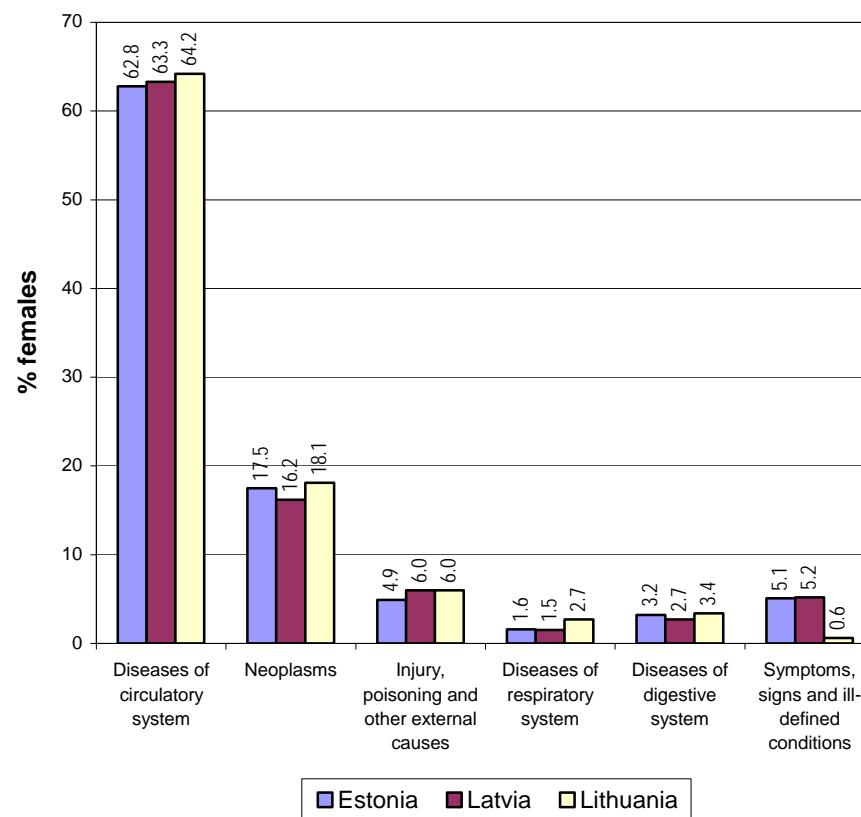
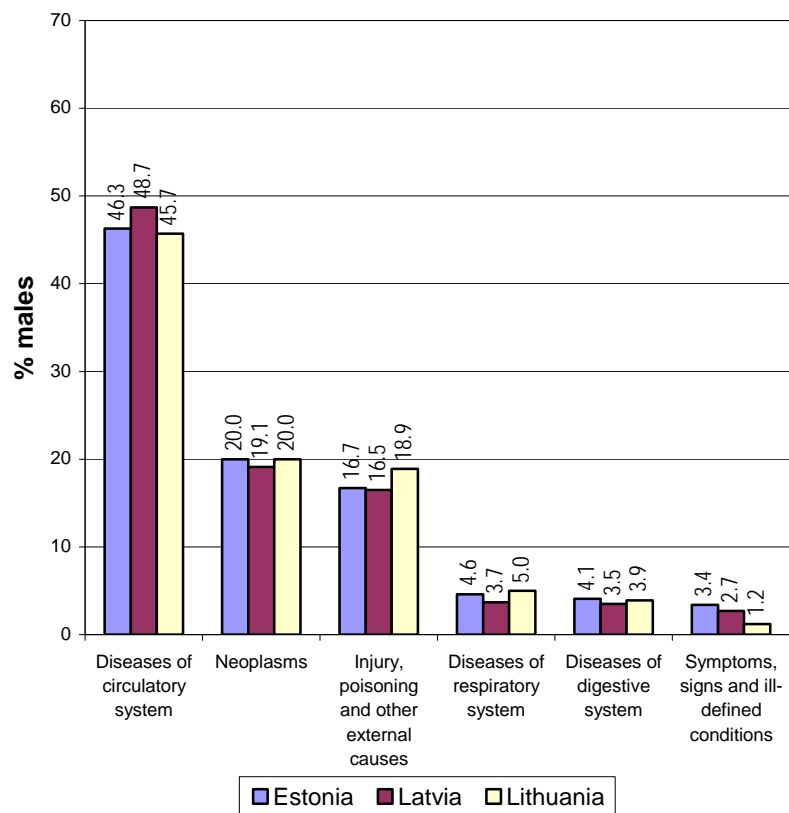
## Health in the Baltic countries

### Deaths by cause per 100,000 population in 2002

Causes of death	Estonia			Latvia			Lithuania		
	Total	Males	Females	Total	Males	Females	Total	Males	Females
Certain infectious and parasitic diseases	9.1	14.5	4.4	13.2	19.5	7.8	13.7	20.9	7.3
Neoplasms	254.2	299.9	215.1	245.0	290.5	206.2	229.9	274.0	191.2
Diseases of the blood and blood forming organs and certain disorders involving the immune mechanisms	0.8	1.3	0.4	1.1	0.9	1.2	1.0	0.7	1.3
Endocrine, nutritional and metabolic diseases	11.3	7.2	14.8	11.6	8.5	14.3	9.8	9.2	10.3
Mental disorders and behavioural disorders	4.5	7.7	1.8	4.7	7.2	2.5	2.0	2.6	1.6
Diseases of the nervous system	16.9	21.4	13.1	16.7	21.2	12.8	10.4	12.7	8.4
Diseases of the eye and adnexa	0.0	0.0	0.0	0.0	0.0	0.0	0.0	0.0	0.0
Diseases of the ear and mastoid process	0.1	0.2	0.1	0.1	0.0	0.2	0.1	0.1	0.1
Diseases of the circulatory system	734.8	692.7	770.8	777.8	742.2	808.1	643.7	615.0	668.9
Diseases of the respiratory system	42.6	68.8	20.2	36.4	56.0	19.7	46.5	67.3	28.2
Diseases of the digestive system	49.5	61.5	39.3	43.2	52.9	34.9	43.5	52.4	35.8
Diseases of the skin and subcutaneous tissue	1.3	1.1	7.2	1.3	1.1	1.5	1.4	1.5	1.3
Diseases of the musculo-skeletal and connective tissue	5.7	3.8	7.2	3.5	2.7	4.3	2.7	1.9	3.3
Diseases of the genito-urinary system	10.5	8.0	12.7	14.8	17.0	13.0	8.8	9.6	8.2
Pregnancy, childbirth and puerperium*	-	-	0.1	-	-	0.1	-	-	0.3
Certain conditions originating in perinatal period	2.2	3.4	1.2	3.2	3.9	2.6	2.0	2.5	1.6
Congenital malformations, deformations and chromosomal abnormalities	3.1	4.6	1.8	5.0	5.9	4.1	4.7	5.2	4.2
Symptoms, signs and abnormal clinical and laboratory findings, not elsewhere classified	56.8	50.1	62.4	55.3	41.8	66.7	10.5	15.6	6.0
Injury, poisoning and certain other consequences of external causes	147.9	250.1	60.5	156.8	251.3	76.2	152.2	254.5	52.5
<b>TOTAL</b>	<b>1351.0</b>	<b>1496.0</b>	<b>1227.0</b>	<b>1389.6</b>	<b>1522.4</b>	<b>1276.3</b>	<b>1183.9</b>	<b>1345.9</b>	<b>1041.9</b>

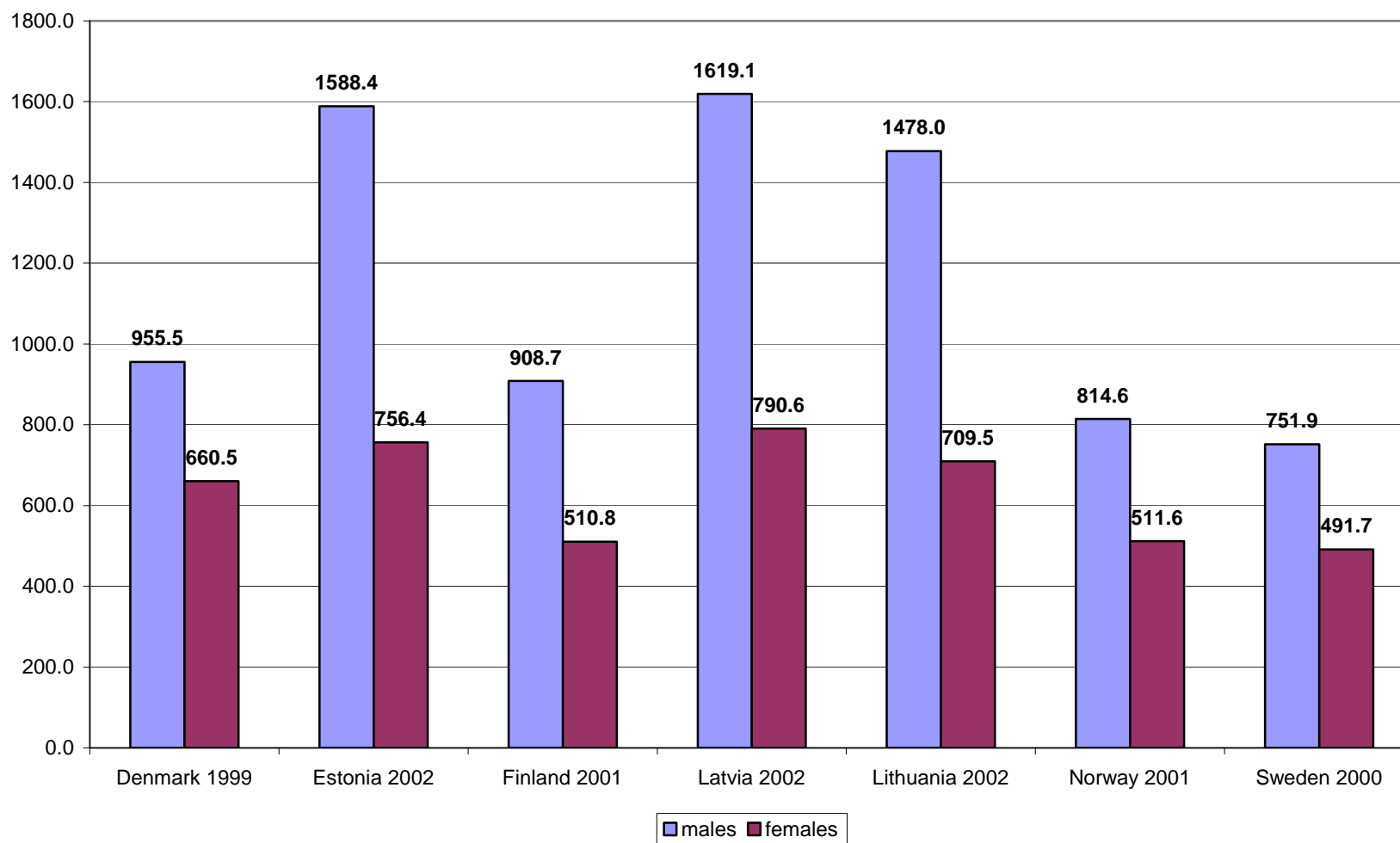
\*) per 100,000 females

Main causes of death in 2002



## Health in the Baltic countries

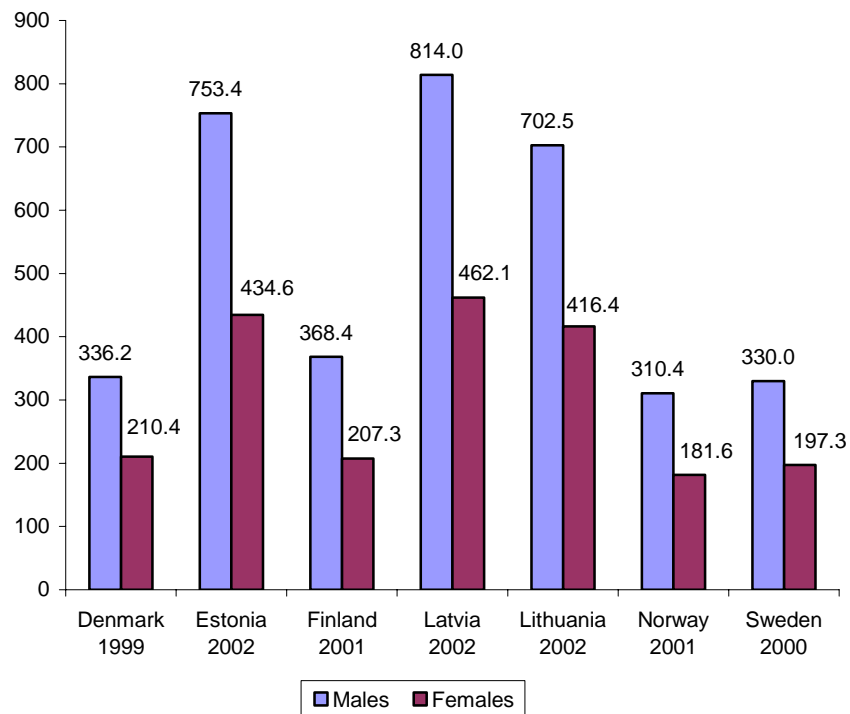
### Age-standardized death rates (per 100,000 European standard population)



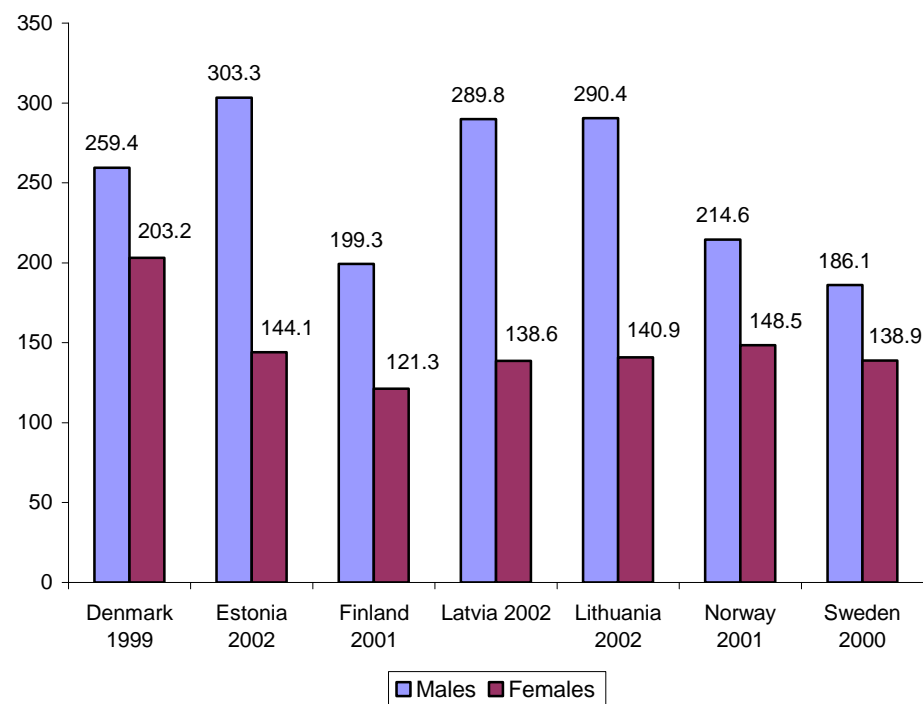
## Health in the Baltic countries

### Age-standardized death rates (per 100,000 European standard population)

#### by diseases of the circulatory system

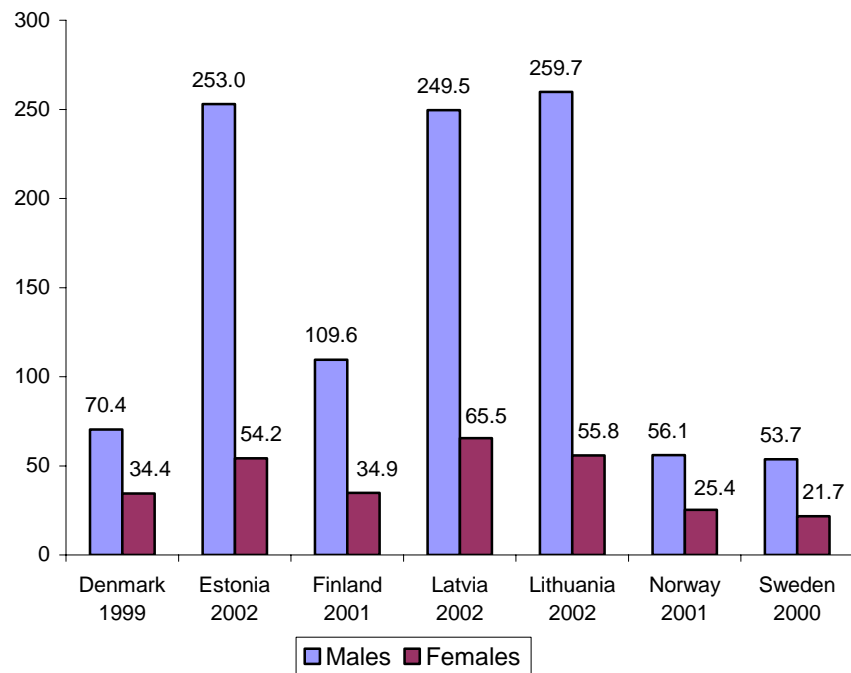


#### by malignant neoplasms

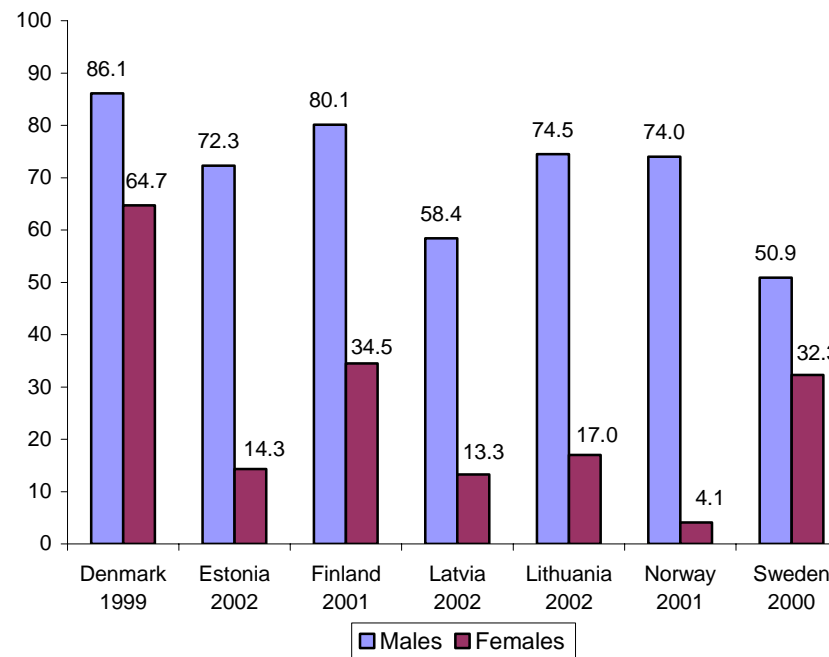


**Age-standardized death rates**  
(per 100,000 European standard population)

**by accidents, injuries and poisoning**

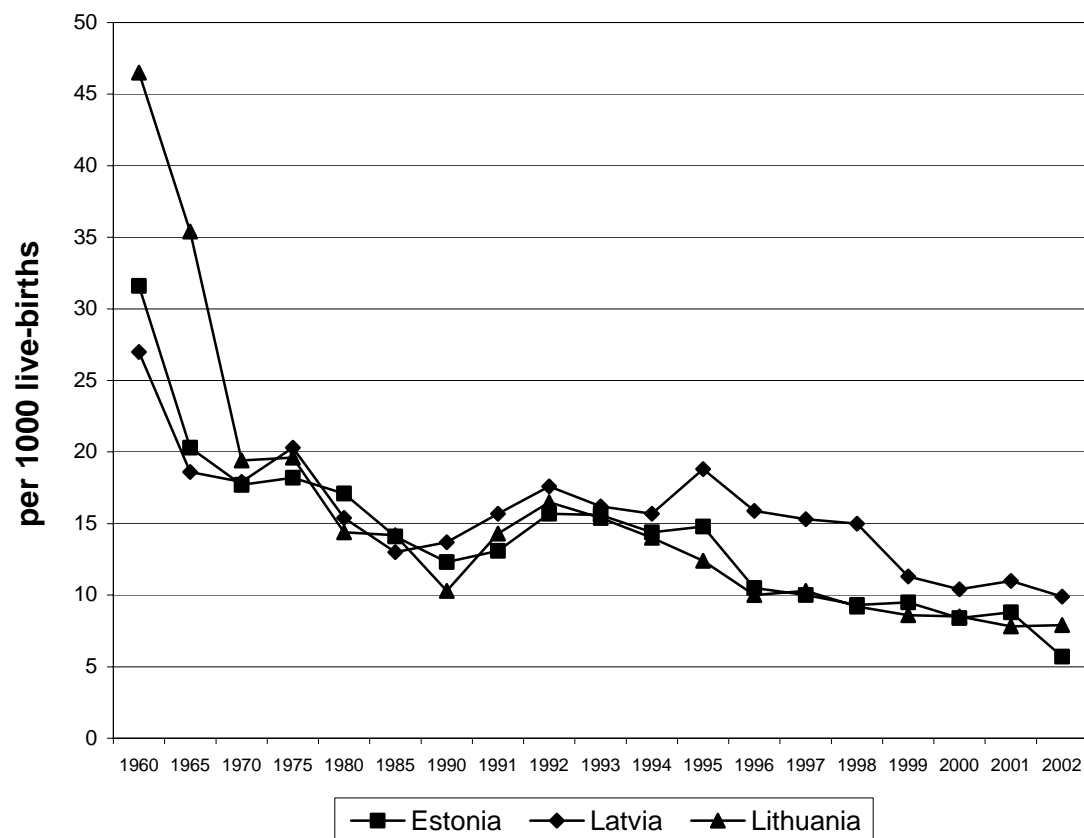


**by diseases of the respiratory system**

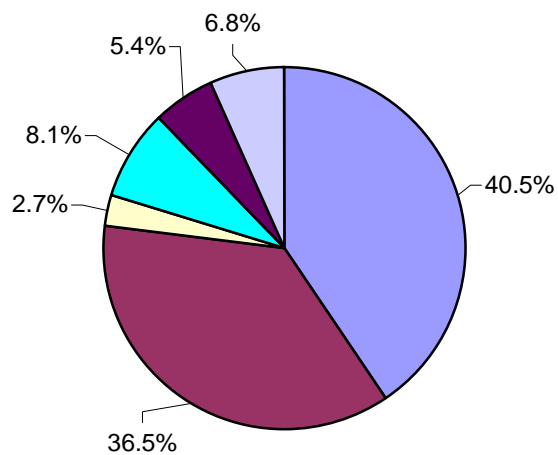


**Infant mortality**  
(per 1000 live-births)

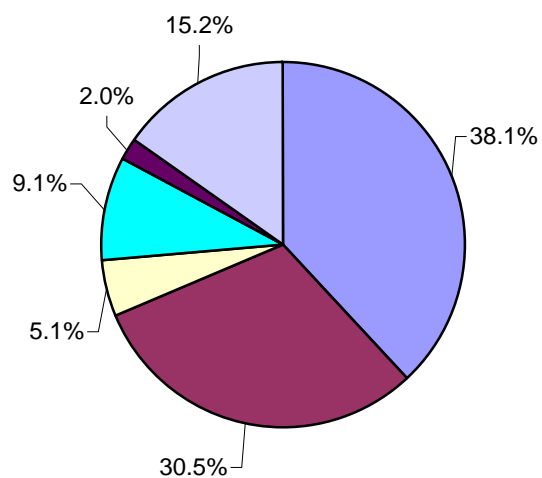
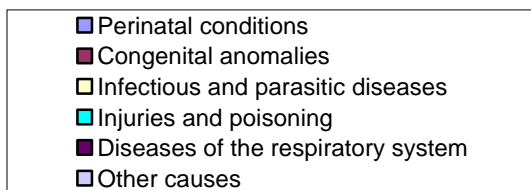
Years	Estonia	Latvia	Lithuania
1925	-	107.2	179.0
1935	-	78.9	-
1940	84.9	74.9	98.5
1960	31.6	27.0	46.5
1965	20.3	18.6	35.4
1970	17.7	17.9	19.4
1975	18.2	20.3	19.6
1980	17.1	15.4	14.4
1985	14.1	13.0	14.2
1990	12.3	13.7	10.3
1991	13.1	15.7	14.3
1992	15.7	17.6	16.5
1993	15.6	16.2	15.4
1994	14.4	15.7	14.0
1995	14.8	18.8	12.4
1996	10.5	15.9	10.0
1997	10.0	15.3	10.3
1998	9.3	15.0	9.2
1999	9.5	11.3	8.6
2000	8.4	10.4	8.5
2001	8.8	11.0	7.8
2002	5.7	9.9	7.9



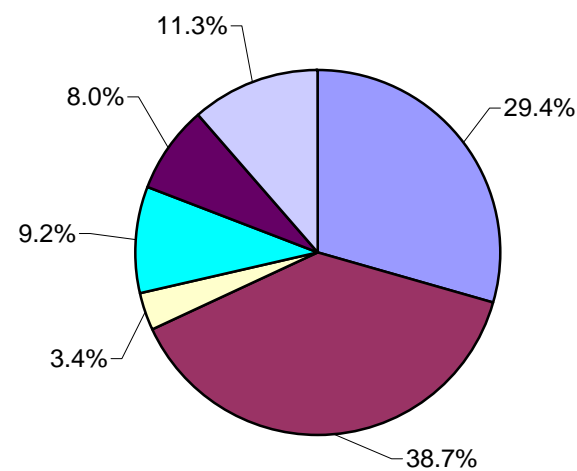
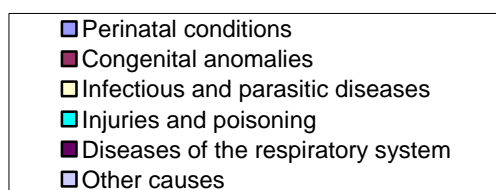
Structure of infant mortality (%) in 2002



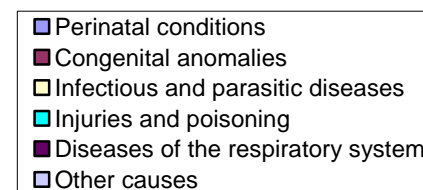
Estonia



Latvia



Lithuania





## Health in the Baltic countries

### Infant mortality by causes per 10,000 live births in 2002

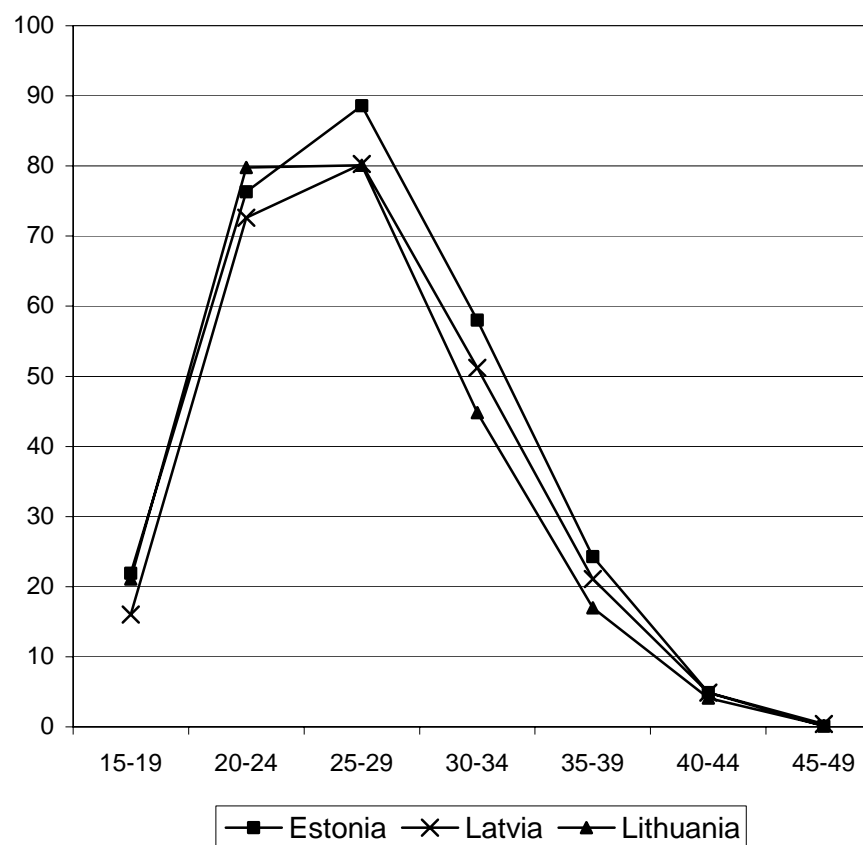
	Estonia		Latvia		Lithuania	
	Rate	%	Rate	%	Rate	%
Certain conditions originating in the perinatal period	23.1	40.5	37.5	38.1	23.3	29.4
Congenital anomalies	20.8	36.5	30.0	30.5	30.7	38.7
Diseases of the respiratory system	3.1	5.4	2.0	2.0	6.3	8.0
Infectious and parasitic diseases	1.5	2.7	5.0	5.1	2.7	3.4
Accidents, injury and poisoning	4.6	8.1	9.0	9.1	7.3	9.2
Diseases of the nervous system and sense organs	1.5	2.7	3.0	3.0	1.0	1.3
Diseases of the digestive system	0.0	0.0	0.5	0.5	0.0	0.0
Other causes	2.3	4.1	11.5	11.7	8.0	10.1
<b>TOTAL</b>	<b>56.9</b>	<b>100.0</b>	<b>98.5</b>	<b>100.0</b>	<b>78.6</b>	<b>100.0</b>

### Perinatal, neonatal and maternal mortality in 2002

	Estonia	Latvia	Lithuania
Perinatal mortality per 1000 births	8.1	12.6	9.6
Foetal death rate per 1000 births	5.7	8.7	6.4
Neonatal mortality per 1000 live births	3.7	5.8	4.3
Early neonatal mortality per 1000 live births	2.4	3.9	3.2
Maternal mortality per 100000 live births	7.7	5.0	20.4
Standard perinatal mortality	6.4	10.5	6.5
Standard foetal death rate	4.8	7.3	5.0

**Birth rates by age of mother in 2002**  
per 1000 women

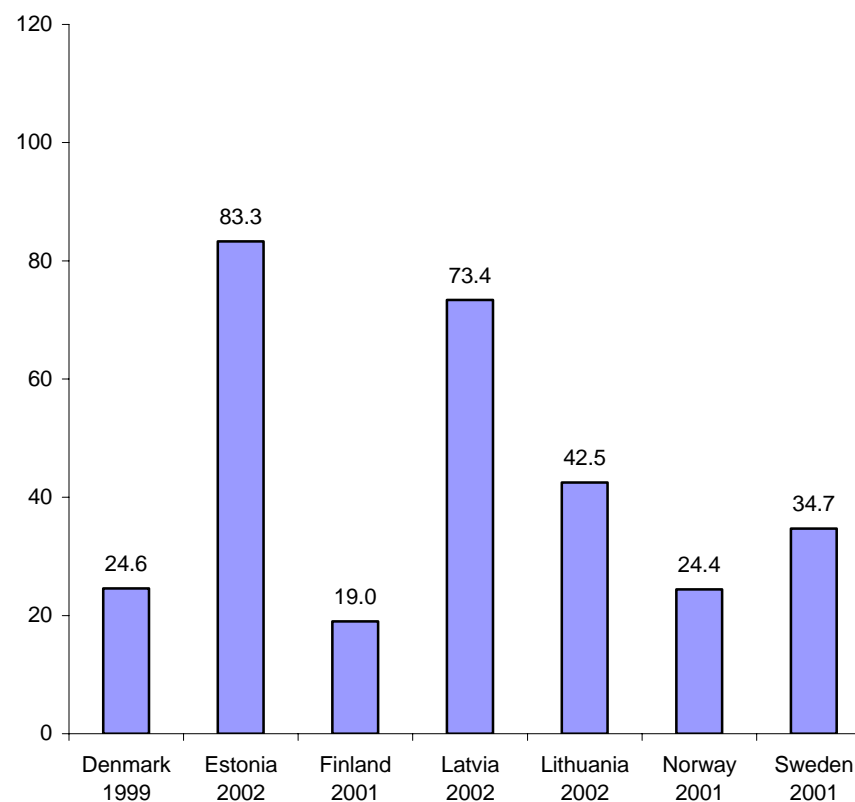
	Estonia	Latvia	Lithuania
Women 15-49 years of age	38.0	33.9	33.8
Of them by age:			
15-19	21.9	16.0	21.1
20-24	76.3	72.6	79.8
25-29	88.6	80.3	80.1
30-34	58.0	51.2	44.8
35-39	24.3	21.1	17.0
40-44	4.9	4.9	4.1
45-49	0.1	0.4	0.2
<b>Total fertility rate</b>	1.37	1.23	1.24



**Abortions in 2002**

	Estonia	Latvia	Lithuania
<b>All abortions</b>			
Total number	13158	18995	18907
Per 1000 women aged 15-49 years	38.4	32.1	21.3
Per 100 live births	101.1	95.0	64.3
<b>Induced abortions</b>			
Total number	10839	14685	12495
Per 1000 women aged 15-49 years	31.6	24.8	14.1
Per 100 live births	83.3	73.4	42.5
<b>Percentage</b>			
Spontaneous abortions	9.5	17.5	25.5
Legal abortions	80.4	75.2	65.4
Therapeutic abortions	2.0	2.1	0.7
Other abortions	8.1	5.1	8.4

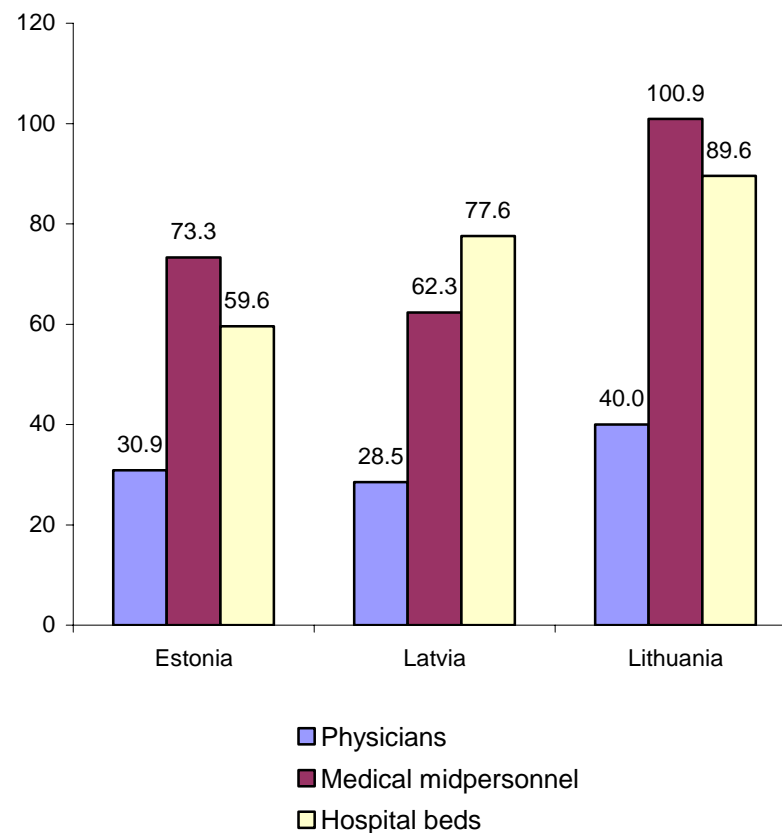
**Induced abortions per 100 live births**



**Health facilities in 2002**

	Estonia	Latvia	Lithuania
<b>Hospitals</b>	50	129	196
Hospital beds:			
Thousand	8.1	18.1	31.0
Per 10,000 population	59.6	77.6	89.6
<b>Physicians:</b>			
Thousand	4.2	6.6	13.9
Per 10,000 population	30.9	28.5	40.0
<b>Dentists:</b>			
Thousand	1.1	1.3	2.3
Per 10,000 population	7.9	5.4	6.7
<b>Medical midpersonnel:</b>			
Thousand	9.9	14.6	34.9
Per 10,000 population	73.3	62.3	100.9
<b>Hospital admission:</b>			
Thousand	259.8	476.4	819.3
Per 100 population	19.1	20.4	236.2
<b>Physicians visits:</b>			
Million	8.0	10.7	22.0
Per 1 inhabitant	5.9	4.6	6.4

**Number of physicians, medical midpersonnel and hospital beds per 10,000 population in 2002**



Physicians by speciality at the end of 2002

	Estonia		Latvia		Lithuania	
	Number	Per 10,000 population	Number	Per 10,000 population	Number	Per 10,000 population
TOTAL *	4190	30.9	6653	28.5	13856	40.0
Of them:						
Family doctors and general practitioners	701	5.2	1027	4.4	1150	3.3
Internal medicine	509	3.8	830	3.6	2575	7.4
Surgery (include orthopaedics)	388	2.9	430	1.8	1116	3.2
Paediatrics	311	2.3	339	1.5	1413	4.1
Gynaecology (include obstetrics)	287	2.1	457	2.0	792	2.3
Oncology	28	0.2	80	0.3	138	0.4
Otolaryngology	96	0.7	165	0.7	289	0.8
Ophthalmology	114	0.8	198	0.8	355	1.0
Anaesthesiology	256	1.9	345	1.5	561	1.6
Neurology	145	1.1	231	1.0	495	1.4
Psychiatry	174	1.3	210	0.9	510	1.5
Narcology	-	-	110	0.5	46	0.1
Tuberculosis	-	-	146	0.6	145	0.4
Infectology	26	0.2	49	0.2	71	0.2
Epidemiology	-	-	76	0.3	107	0.3
Dermatology & venerology	77	0.6	112	0.5	184	0.5
Radiology	177	1.3	280	1.2	451	1.3
Pathology	31	0.2	42	0.2	73	0.2
Forensic medicine	-	-	44	0.2	65	0.2
Laboratory	120	0.9	221	0.9	116	0.3
Hygiene	-	-	56	0.2	161	0.5
Others	750	5.5	1205	5.2	3043	8.8
* Number of dentists is not included						

**Hospital beds by speciality at the end of 2002**

	<b>Estonia</b>			<b>Latvia*</b>			<b>Lithuania</b>		
	Number of beds	Per 10000 population	%	Number of beds	Per 10000 population	%	Number of beds	Per 10000 population	%
<b>TOTAL</b>	8088	59.6	100.0	18143	77.6	100.0	31031	89.6	100.0
Of them:									
Internal medicine	1634	12.0	20.2	3224	13.8	17.8	5766	16.7	18.6
Rehabilitation	381	2.8	4.7	489	2.1	2.7	1092	3.2	3.5
Surgery (include orthopaedics)	1625	12.0	20.1	3550	15.2	19.6	5546	16.0	17.9
Oncology (include radiology)	122	0.9	1.5	895	3.8	4.9	1130	3.3	3.6
Otolaryngology	99	0.7	1.2	202	0.9	1.1	497	1.4	1.6
Ophthalmology	49	0.4	0.6	202	0.9	1.1	340	1.0	1.1
Obstetrics	340	2.5	4.2	650	2.8	3.6	1219	3.5	3.9
Gynaecology	260	1.9	3.2	630	2.7	3.5	1040	3.0	3.4
Neurology	367	2.7	4.5	1065	4.6	5.9	1992	5.8	6.4
Dermatology & venerology	69	0.5	0.9	118	0.5	0.7	215	0.6	0.7
Infectious	190	1.4	2.3	742	3.2	4.1	820	2.4	2.6
Tuberculosis	229	1.7	2.8	1130	4.8	6.2	2029	5.9	6.5
Paediatrics	447	3.3	5.5	822	3.5	4.5	1731	5.0	5.6
Psychiatry	854	6.3	10.6	3316	14.2	18.3	3552	10.3	11.4
Narcology	-	-	-	385	1.6	2.1	264	0.8	0.9
General & nursing	-	-	-	408	1.7	2.2	3139	9.1	10.1

\* Without short-term social care beds

**Selected notifiable diseases**  
per 100,000 population in 2002

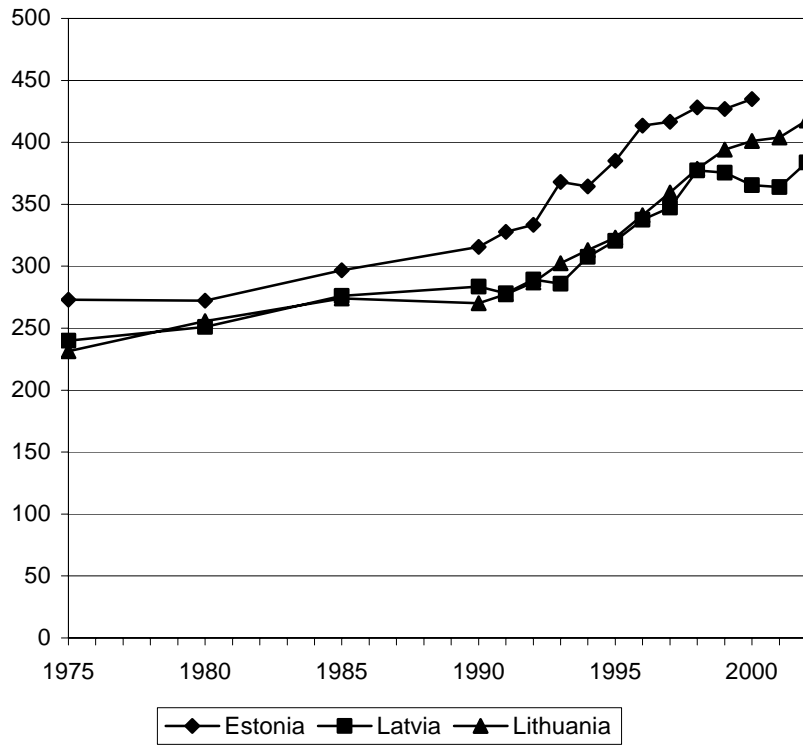
	<b>Estonia</b>	<b>Latvia</b>	<b>Lithuania</b>
Typhoid fever and paratyphoid	0.2	-	0.1
Salmonella infections	24.8	39.6	38.1
Bacillary dysentery	24.7	33.1	15.1
Other intestinal infections	338.7	257.2	272.4
Diphtheria	-	1.9	0.1
Whooping cough	15.8	6.8	0.7
Meningococcal infection	0.7	0.6	1.9
Measles	-	-	3.0
Tick-borne viral encephalitis	6.6	6.5	4.8
Viral hepatitis	49.8	55.0	12.6
A	1.7	1.5	0.8
B	18.0	21.0	7.9
Acute upper respiratory infections	16310.5	14894.3	13644.5
Influenza	205.8	1137.7	1726.8
<b>Malignant neoplasms</b>			
Incidence	434.8*	383.9	417.5
Prevalence	2396.6*	2161.5	1816.0
<b>Tuberculosis</b>			
Incidence (excl. relapses)	38.6	65.9	60.5
Prevalence	37.9	96.4	269.4
Syphilis	21.1	29.0	15.1
Gonorrhoea	39.6	23.7	18.5
AIDS	0.3	2.4	0.3
HIV carrier	66.2	23.2	10.9

\*data for year 2000

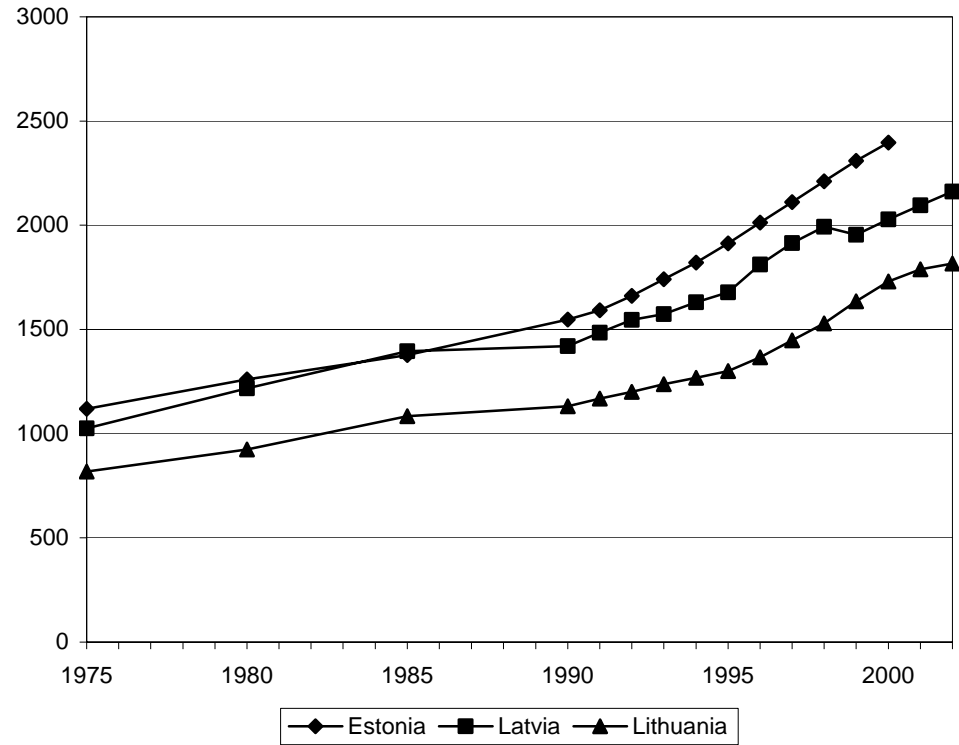
# Health in the Baltic countries

## Malignant neoplasms (per 100,000 population)

### incidence



### prevalence

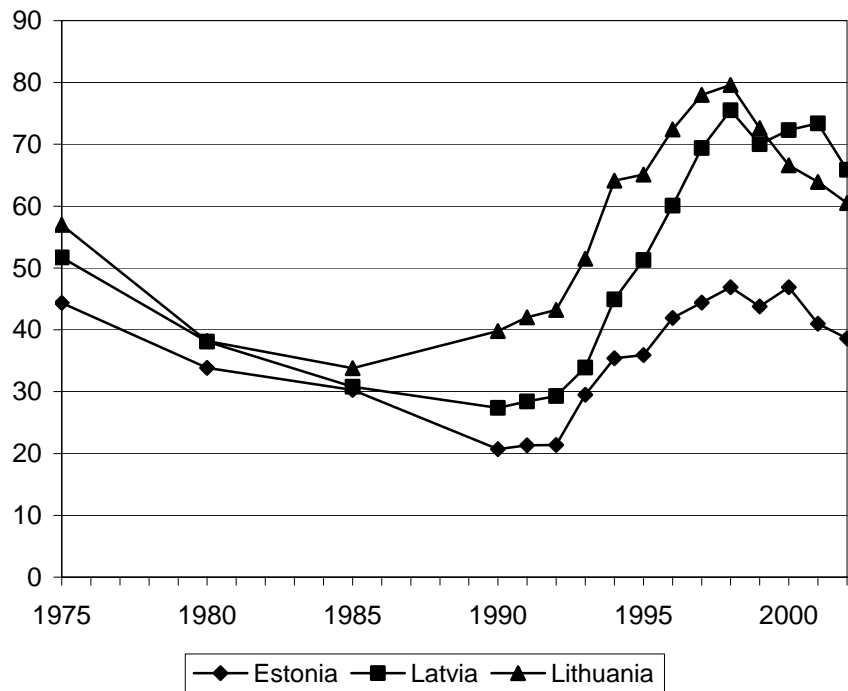




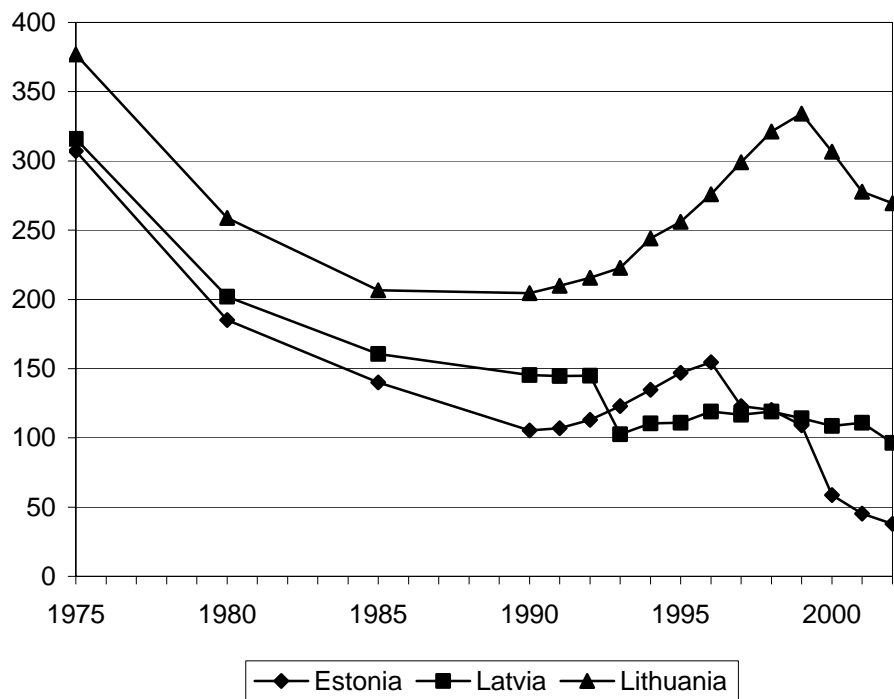
# Health in the Baltic countries

## Tuberculosis (per 100,000 population)

### incidence (excl. relapses)

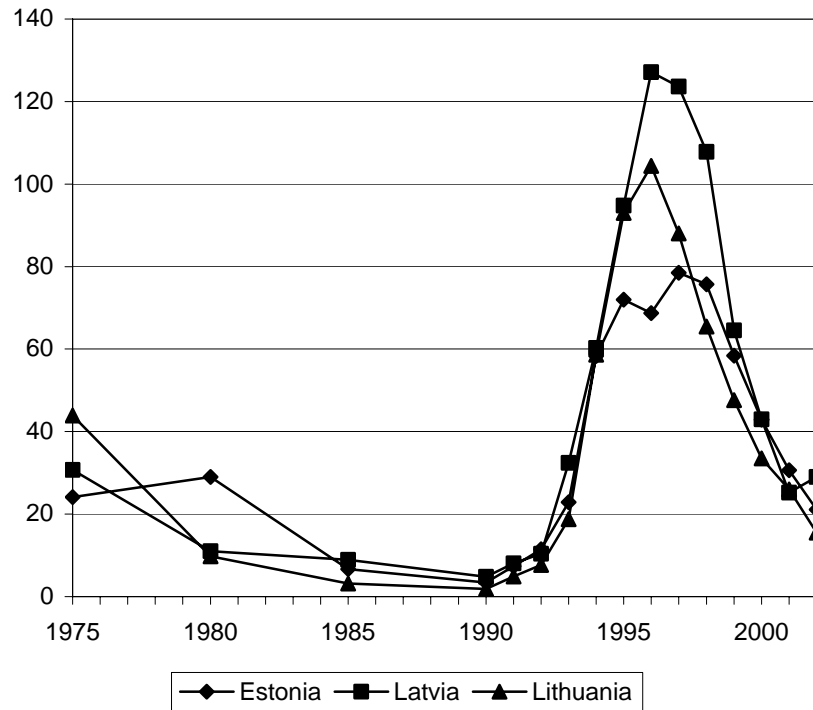


### prevalence

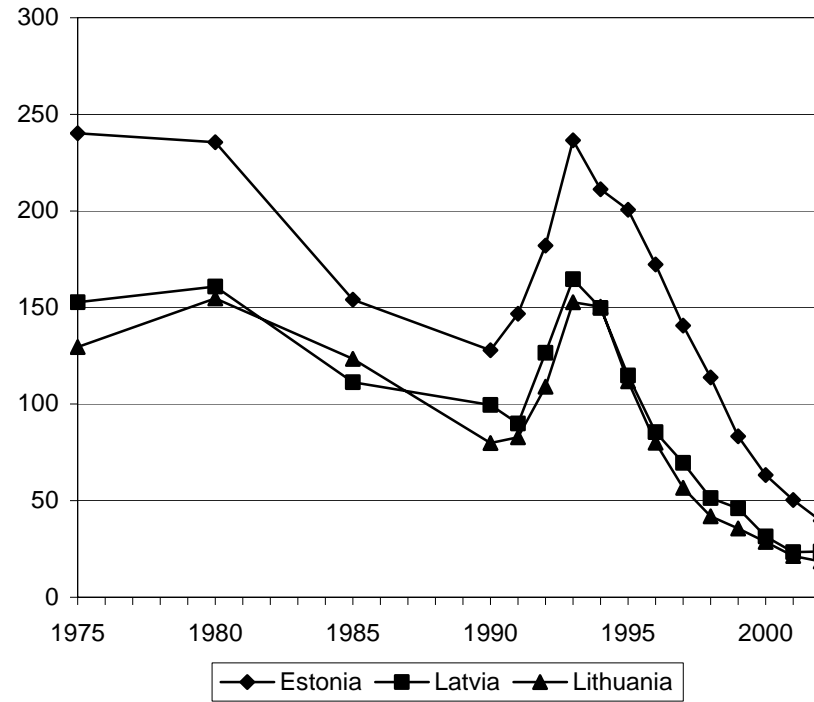


# Health in the Baltic countries

### Incidence of syphilis (per 100000 population)



### Incidence of gonorrhoea (per 100000 population)



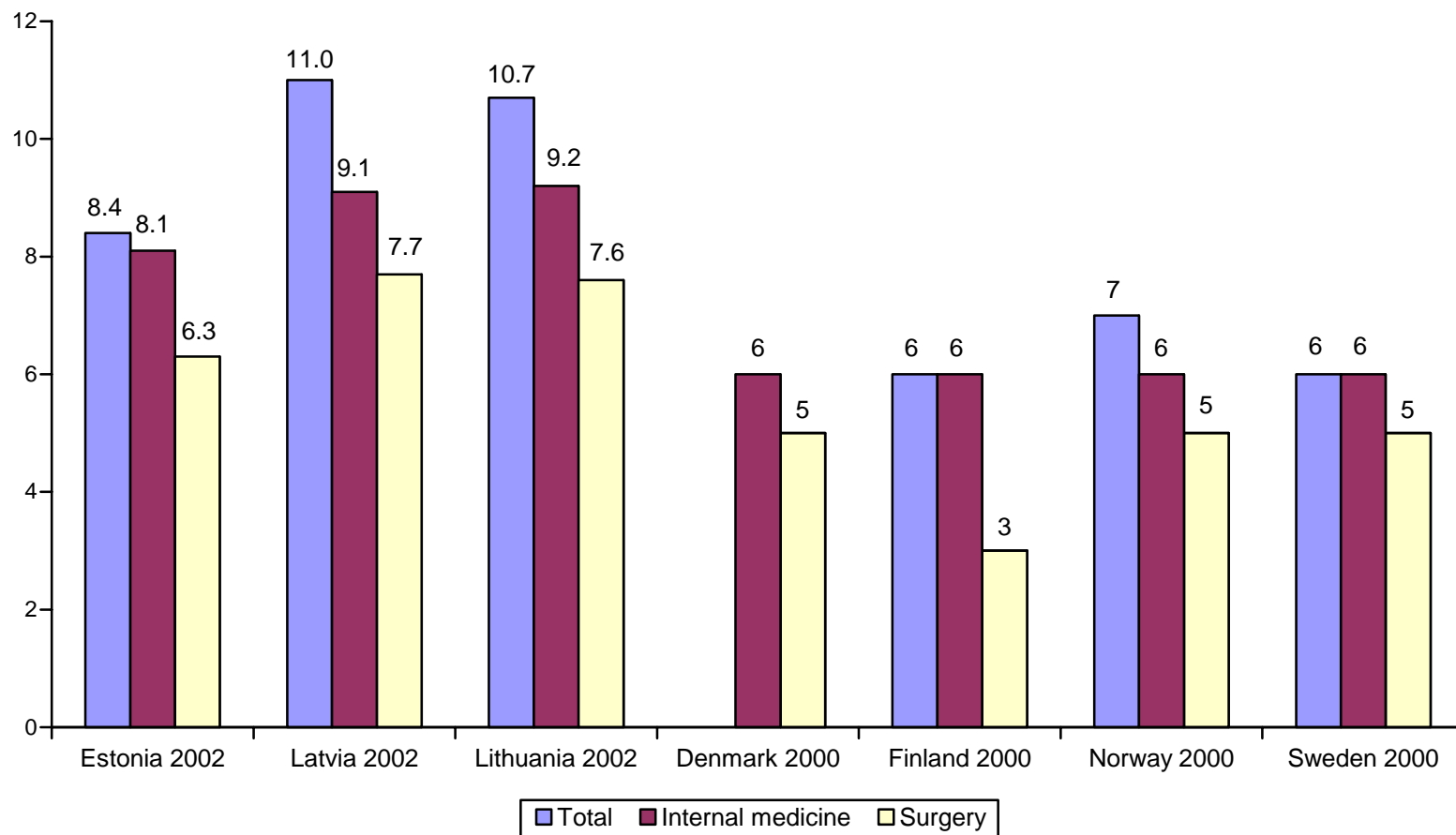
**Hospital beds utilization by speciality in 2002**

	Estonia					Latvia*					Lithuania				
	Admission per 1000 pop.	Bed occupancy		Average length of stay	Bed turnover	Admission per 1000 pop.	Bed occupancy		Average length of stay	Bed turnover	Admission per 1000 pop.	Bed occupancy		Average length of stay	Bed turnover
		Days	%				Days	%				Days	%		
TOTAL	191.2	247.0	67.7	8.4	29.5	202.3	288.0	78.9	11.0	26.3	236.2	276.2	75.7	10.7	25.9
Internal medicine	38.2	246.0	67.4	8.1	29.6	42.2	289.3	79.3	9.1	31.7	48.4	285.3	78.2	9.2	31.2
Rehabilitation	4.4	211.6	58.0	8.4	15.4	3.2	282.4	77.4	18.5	15.3	3.5	290.2	79.5	25.9	11.2
Surgery (include orthopaedics)	50.2	282.1	77.3	6.3	24.8	51.5	272.1	74.5	7.7	35.2	56.7	272.2	74.6	7.6	35.7
Oncology (include radiology)	3.4	297.9	81.6	8.0	4.3	9.2	260.4	71.3	10.7	24.3	8.4	269.2	73.8	10.8	24.9
Otolaryngology	6.7	235.9	64.6	2.8	85.0	3.6	252.1	69.1	5.9	42.5	7.4	238.2	65.3	4.9	48.5
Ophthalmology	3.6	125.3	34.3	2.3	54.8	2.7	198.3	54.3	6.3	31.4	5.4	291.0	79.7	5.3	54.4
Obstetrics	13.7	183.7	50.3	3.7	53.5	10.7	230.6	63.2	6.0	38.8	13.5	212.1	58.1	5.8	36.9
Gynaecology	14.2	169.7	46.5	2.5	69.3	15.6	253.0	69.3	4.3	58.6	16.2	241.8	66.2	4.5	53.5
Neurology	9.6	267.1	73.2	8.2	32.8	13.8	312.3	85.6	10.2	30.7	17.5	288.1	78.9	9.6	30.1
Dermatology & venerology	1.4	246.2	67.5	11.1	22.2	1.2	324.5	88.9	13.6	23.9	1.2	213.6	58.5	11.8	18.1
Infectious	5.6	212.6	58.2	5.8	36.8	10.2	216.2	59.2	6.7	32.4	8.5	255.2	69.9	6.6	38.7
Tuberculosis	0.9	299.7	82.1	58.1	5.0	2.9	326.3	89.4	52.4	6.2	3.0	276.5	75.7	55.4	5.0
Paediatrics	12.2	196.8	53.9	5.5	34.6	11.4	259.1	71.0	7.8	33.4	17.6	248.5	68.1	6.8	36.8
Psychiatry	10.4	260.1	71.3	19.0	13.5	7.8	348.9	95.6	62.7	5.6	8.9	299.4	82.0	35.9	8.3
Narcology	-	-	-	-	-	5.6	235.0	64.4	6.9	33.9	1.6	254.3	69.7	12.7	20.1
General & nursing	-	-	-	-	-	4.6	221.0	60.6	8.4	26.3	6.3	305.0	83.6	43.3	7.0

\* Without short-term social care beds

## Health in the Baltic countries

### Average length of stay (days)



## Discharges by groups of diseases in 2002

	Estonia				Latvia*				Lithuania			
	children		adults		children		adults		children		adults	
	discharges per 1000 pop.	average length of stay	discharges per 1000 pop.	average length of stay	discharges per 1000 pop.	average length of stay	discharges per 1000 pop.	average length of stay	discharges per 1000 pop.	average length of stay	discharges per 1000 pop.	average length of stay
Certain infectious and parasitic diseases	17.5	4.3	4.9	19.0	15.9	9.3	6.6	31.7	18.1	7.1	5.8	30.2
Neoplasms	4.9	4.0	18.6	7.9	2.5	9.8	19.5	10.2	3.0	8.3	18.6	11.0
Diseases of the blood and blood forming organs and certain disorders involving the immune mechanisms	1.8	4.1	1.0	9.2	0.8	9.1	0.7	10.7	1.4	7.0	0.8	8.8
Endocrine, nutritional and metabolic diseases	1.9	5.2	3.8	9.0	1.8	7.1	4.4	9.3	2.4	6.9	4.3	10.5
Mental disorders and behavioural disorders	6.5	9.6	13.0	17.1	7.6	28.4	16.8	30.4	3.2	15.8	13.4	30.7
Diseases of the nervous system	8.4	7.9	5.0	9.5	7.6**	8.2**	10.5**	8.7**	5.6	8.3	12.4	10.8
Diseases of the eye and adnexa	1.1	1.9	2.7	2.3	-	-	-	-	3.7	8.6	5.4	5.6
Diseases of the ear and mastoid process	5.7	4.7	1.3	4.6	-	-	-	-	3.6	7.0	1.7	8.5
Diseases of the circulatory system	1.9	4.5	37.7	11.0	2.6	7.2	36.6	10.2	2.4	5.6	51.4	13.1
Diseases of the respiratory system	47.9	4.8	12.2	7.6	51.8	7.8	12.7	9.4	70.1	6.5	16.5	10.0
Diseases of the digestive system	12.7	3.8	18.5	5.9	20.2	5.1	18.4	7.3	25.7	4.6	20.3	7.7
Diseases of the skin and subcutaneous tissue	4.3	4.9	3.6	9.2	5.2	6.3	3.6	8.7	6.0	5.7	4.0	10.2
Diseases of the musculo-skeletal and connective tissue	3.7	5.9	15.6	8.6	5.4	13.0	12.7	10.7	3.6	9.6	12.5	11.8
Diseases of the genitourinary system	7.0	5.2	14.6	4.7	7.4	6.4	15.2	5.9	6.5	6.0	18.8	6.3
Pregnancy, childbirth and puerperium	0.1	3.3	22.7	3.3	2.4	5.5	22.7	5.2	0.1	5.9	23.8	5.0
Certain conditions originating in perinatal period	11.2	7.7	-	-	14.2	7.6	-	-	16.4	7.7	-	-
Congenital malformations, deformations and chromosomal abnormalities	7.4	6.4	0.6	6.3	5.6	9.1	0.5	8.0	7.0	7.2	0.4	8.6
Symptoms, signs and abnormal clinical and laboratory findings, not elsewhere classified	4.2	3.1	1.1	4.6	0.6	8.8	0.1	5.0	6.6	26.9	1.1	10.8
Injury, poisoning and certain other consequences of external causes	12.3	4.4	12.8	9.9	20.1	5.3	22.2	8.5	19.5	4.9	22.0	9.0
<b>TOTAL</b>	163.5	5.2	190.8	8.5	171.6	8.3	203.3	11.1	204.8	7.2	233.3	11.4

\* Without short term social care beds

\*\* Diseases of the nervous system and sense organs

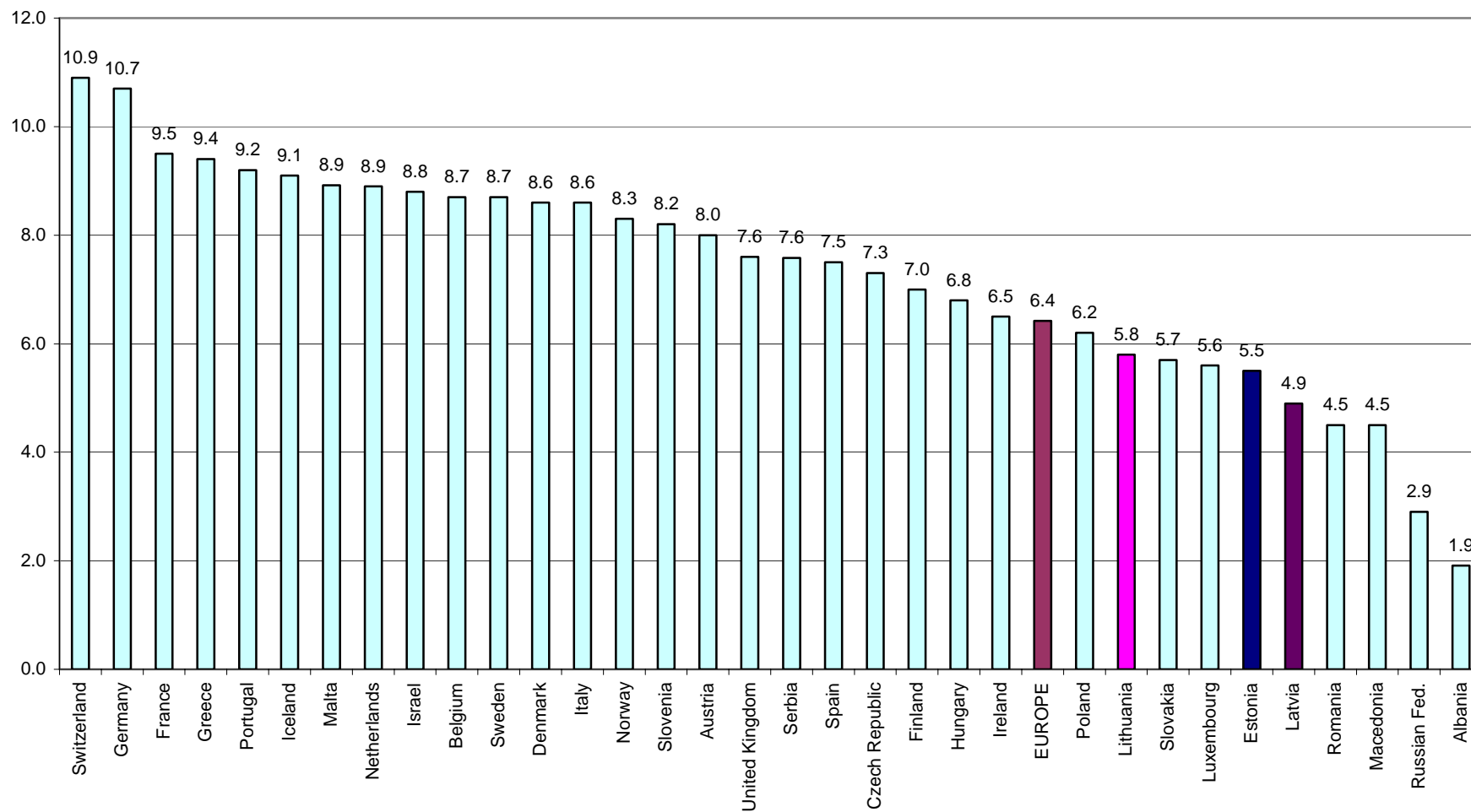
**Surgical operations in hospitals in 2002**

	Estonia			Latvia			Lithuania		
	Number	Per 100,000 population	%	Number	Per 100,000 population	%	Number	Per 100,000 population	%
TOTAL	87428	6434.9	100.0	148260	6339.6	100.0	266030	7668.6	100.0
On the nervous system	2676	197.0	3.1	3429	146.6	2.3	6628	191.1	2.5
On the endocrine system	523	38.5	0.6	1323	56.6	0.9	1632	47.0	0.6
On the eye	3339	245.8	3.8	5034	215.3	3.4	14372	414.3	5.4
On the ear, throat and nose	10645	783.5	12.2	7587	324.4	5.1	22437	646.8	8.4
On the respiratory system	995	73.2	1.1	2019	86.3	1.4	3401	98.0	1.3
On the heart	1248	91.9	1.4	5820	248.9	3.9	7560	217.9	2.8
On the vessels	486	35.8	0.6	3554	152.0	2.4	13248	381.9	5.0
On the digestive system	14271	1050.4	16.3	20585	880.2	13.9	43083	1241.9	16.2
On the kidneys and ureter	1151	84.7	1.3	1618	69.2	1.1	5513	158.9	2.1
On the prostate*	1126	179.8	1.3	2066	191.9	1.4	7160	441.7	2.7
On the female genital organs**	10729	1465.0	12.3	21017	1665.3	14.2	39166	2119.2	14.7
Obstetrical operations**	12070	1648.1	13.8	23344	1849.7	15.7	24678	1335.3	9.3
On the musculo-skeletal system	13218	972.9	15.1	25849	1105.3	17.4	38347	1105.4	14.4
On the breast	1058	77.9	1.2	2452	104.8	1.7	2765	79.7	1.0
On the skin and subcutaneous tissue	6060	446.0	6.9	13465	575.8	9.1	24306	700.7	9.1
Other procedures	7833	576.5	9.0	9098	389.0	6.1	11734	338.2	4.4

\*) Per 100,000 male population

\*\*\*) Per 100,000 female population

**Total health care expenditures as % of GDP**



Note: WHO data 1999-2002; data for Estonia, Latvia and Lithuania – 2002  
 \*Estonia – calculated using the OECD manual

## Obstetric Definitions

Live birth -	Foetus that after complete expulsion or extraction from its mother breathes or shows any other evidence of life, irrespective of the duration of the pregnancy.		rate is used for international comparison including births with a weight of 1000 g or more.
Foetal death -	Death prior to the complete expulsion or extraction from its mother of a product of conception after 22 weeks of gestation. Standard rate is used for international comparison including births with a weight of 1000 g or more.	Maternal death -	The death of a woman while pregnant or within 42 days after termination of pregnancy, irrespective of the duration and the site of the pregnancy, from any cause related to or aggravated by the pregnancy or its management, but not from accidental or incidental causes.
Infant death -	Live-born infant that dies during the first year of life.	Abortion -	Spontaneous or induced (legal, therapeutic, criminal) abortion is pregnancy termination or artificial extraction of the product of the conception during the first 22 weeks of gestation.
Neonatal death -	Death occurring at the age of 0 to 27 full days of life (27 days 23 hours 59 min.). The first day of life is considered as day zero.		
Early neonatal death -	Death occurring at the age of 0 to 6 full days of life (6 days 23 hours 59 min.). The first day of life is considered as day zero.	Total fertility rate -	The average number of children that would be born per woman if all women lived to the end of their childbearing years and bore children according to a given set of age-specific fertility rates.
Perinatal death -	Foetal deaths and live-born infants that die at the age of 0 to 6 full days of life. Standard		



## Sources

1. Statistical Yearbook of Estonia 2003. Statistical Office of Estonia. Tallinn, 2003
2. Regional Statistics of Estonia 2002. Statistical Office of Estonia. Tallinn, 2003
3. Monthly Bulletin No 4 (136) 2003. Statistical Office of Estonia. Tallinn, 2003
4. Estonian Health Statistics 2000-2002. Ministry of Social Affairs of Estonia. Tallinn, 2003
5. Statistical database on the website of Statistical Office of Estonia <http://www.stat.ee>
6. Demographic Yearbook of Latvia 2003. Central Statistical Bureau of Latvia. Riga, 2003
7. Monthly Bulletin of Latvian Statistics No.1 (104) 2003. Central Statistical Bureau of Latvia. Riga, 2003
8. Yearbook of Healthcare Statistics in Latvia 2002. Latvian Health Statistics and Medical Technology Agency, Health Statistics Department. Riga, 2003
9. Statistical Yearbook of Lithuania 2002. Department of Statistics to the Government of the Republic of Lithuania. Vilnius, 2003.
10. Demographic Yearbook 2002. Department of Statistics to the Government of the Republic of Lithuania. Vilnius, 2003.
11. Health Statistics of Lithuania 2002. Lithuanian Health Information Centre. Vilnius, 2003.
12. Health Statistics in the Nordic Countries 2000. NOMESCO 64:2002.
13. Health for All. Statistical Database. WHO Regional Office for Europe. Version June 2003.

Ministry of Social Affairs of Estonia,  
Gonsiori 29, 15027 Tallinn, Estonia  
Phone: 372-6269301,  
Fax: 372-6992209,  
E-mail: [smin@sm.ee](mailto:smin@sm.ee)  
Website: [www.sm.ee](http://www.sm.ee)

Health Statistics and Medical Technology Agency,  
Duntes 12/22, Riga LV 1005, Latvia  
Phone: 371-7501590  
Fax: 371-7501591  
E-mail: [medstat@vsmta.lv](mailto:medstat@vsmta.lv)  
E. Lavendelis, director

Lithuanian Health Information Centre,  
Kalvariju 153, LT 2042, Vilnius, Lithuania  
Phone: 370-5-2773301  
Fax: 370-5-2773302  
E-mail: [lsic@lsic.lt](mailto:lsic@lsic.lt)  
Website: [www.lsic.lt](http://www.lsic.lt)  
A. Gaižauskiene, director

---

### Health in the Baltic Countries 2002

---

#### Editorial board:

Estonian Medical Statistics Bureau:

E. Palo, Dr. M. Rätsep, M. Ruuge, H. Thomson

Latvian Health Statistics and Medical Technology Agency:

Dr. J. Karaškevica, Dr. D. Mihalovska

Lithuanian Health Information Centre:

Dr. A. Gaižauskiene, R. Gaidelyte

The edition was prepared by:

Health Statistics and Medical Technology Agency, Latvia

I. Karashkevics, Technical secretary